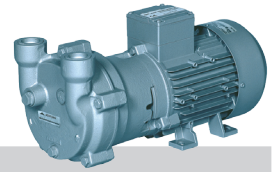
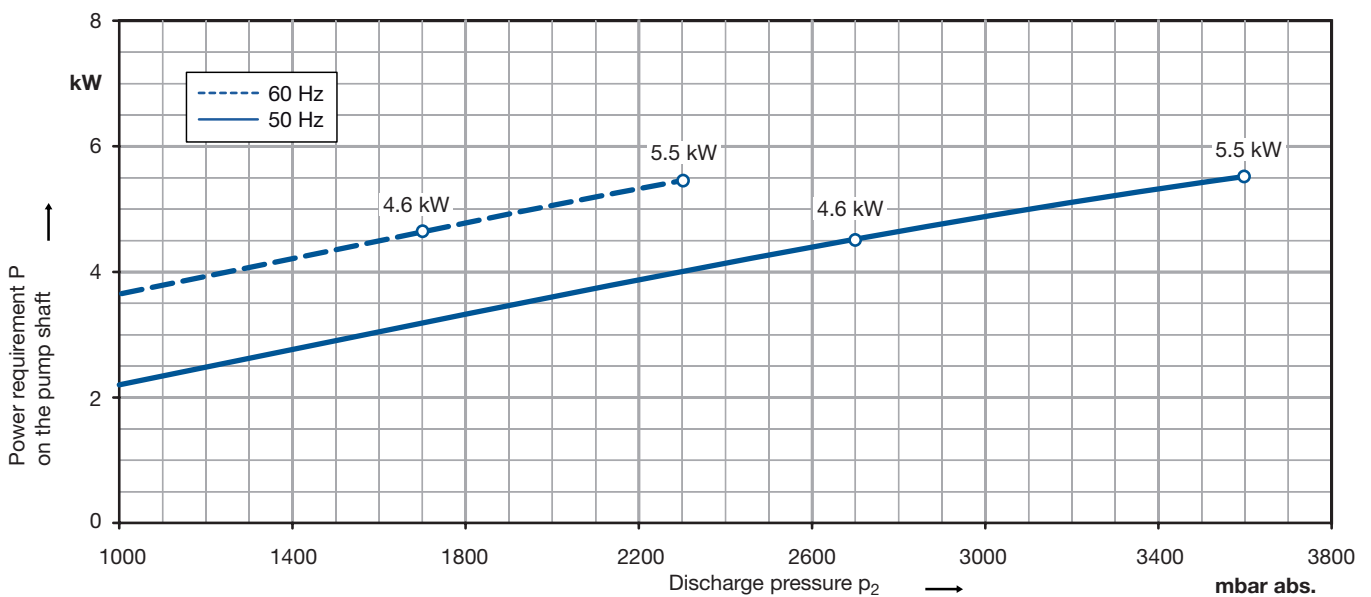
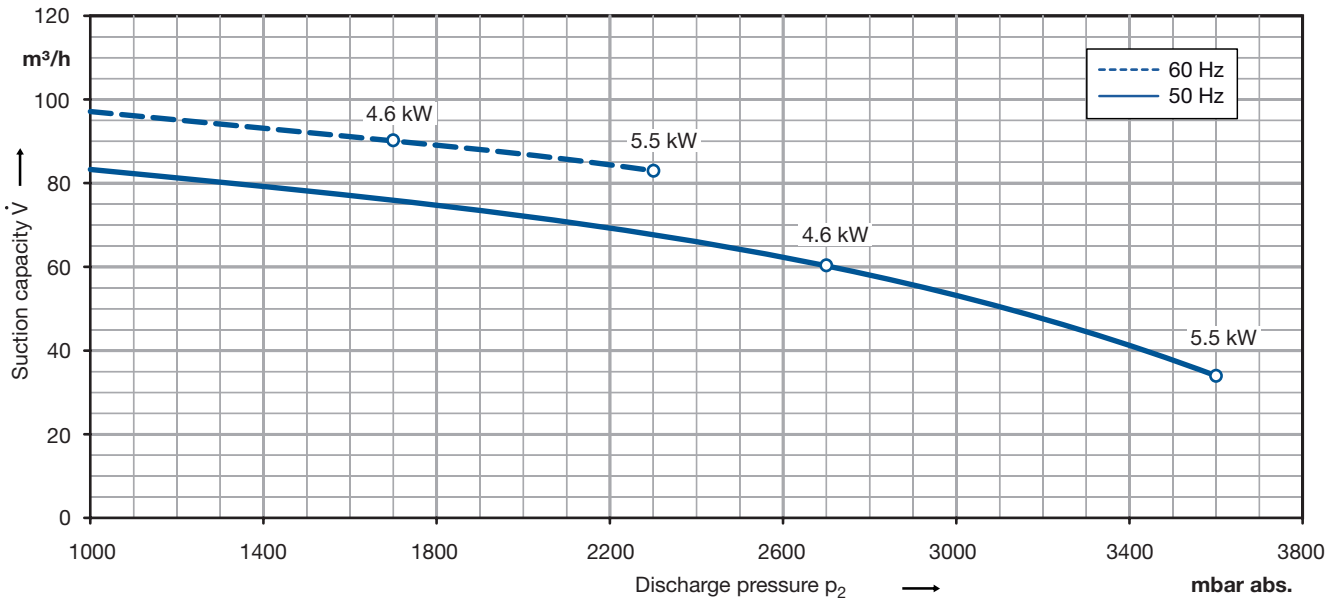


Data sheet liquidring pump

Series L-BV2 | L_200
Range 2BV2 070 Compressor ATEX



Performance curves for compressor operation



The characteristics are valid for the inlet of air with a relative humidity of 50 % and a temperature of 20 °C at a atmospheric pressure of 1013 mbar abs. and water at 15 °C as operating liquid.
The tolerance is $\pm 10 \%$.

The motors are supplied as standard for fixed voltage of 50 resp. 60 Hz and in protection category IP 55. The Compressors are certificated according to ATEX 94/9 EG, category 2G.

Selection and ordering data

Materials	Motor data						Order-No.	Quantity of operating liquid	Sound pressure level **	Weight approx.
	Rated									
	voltage		current	output						
Casing/port plate/impeller	V		A	kW			m³/h	dB(A)	kg	
ATEX 3- 50 Hz version, protection class IP 55, insulation class F										
cast iron/ceramic/bronze	400Δ	690Y	9.2	5.33	4.6		2BV2070-8ND03-6S-Z Z=F91	0.5	73	70
CrNi steel/ceramic/CrNi steel	400Δ	690Y	9.2	5.33	4.6		2BV2070-8PD03-6S-Z Z=F91	0.5	73	70
CrNi steel/CrNi steel/CrNi steel	400Δ	690Y	9.2	5.33	4.6		2BV2070-8HD03-6S-Z Z=F91	0.5	73	70
cast iron/ceramic/bronze	400Δ	690Y	10.4	6.03	5.5		2BV2070-8ND04-6S-Z Z=F91	0.5	74	75
CrNi steel/ceramic/CrNi steel	400Δ	690Y	10.4	6.03	5.5		2BV2070-8PD04-6S-Z Z=F91	0.5	74	75
CrNi steel/CrNi steel/CrNi steel	400Δ	690Y	10.4	6.03	5.5		2BV2070-8HD04-6S-Z Z=F91	0.5	74	75
ATEX 3- 60 Hz version, protection class IP 55, insulation class F										
cast iron/ceramic/bronze	460Δ		8.0		4.6		2BV2070-8NG03-6S-Z Z=F91	0.5	75	70
CrNi steel/ceramic/CrNi steel	460Δ		8.0		4.6		2BV2070-8PG03-6S-Z Z=F91	0.5	75	70
CrNi steel/CrNi steel/CrNi steel	460Δ		8.0		4.6		2BV2070-8HG03-6S-Z Z=F91	0.5	75	70
cast iron/ceramic/bronze	460Δ		9.04		5.5		2BV2070-8NG04-6S-Z Z=F91	0.5	76	75
CrNi steel/ceramic/CrNi steel	460Δ		9.04		5.5		2BV2070-8PG04-6S-Z Z=F91	0.5	76	75
CrNi steel/CrNi steel/CrNi steel	460Δ		9.04		5.5		2BV2070-8HG04-6S-Z Z=F91	0.5	76	75

The motors are designed according to DIN EN 60 034 / DIN IEC 34-1 and temperature class F.

For the three phase machines the tolerances are ± 10 % for fixed voltage . The frequency tolerance is maximum ± 2 %.

All L-BV2 achieve the standards and norms of the low voltage directive 72/23/EWG, rotating electrotechnical motor EN 60034-1-34, electromagnetic compatibility (EMC) DIN EN 61000-0/-6/-4.

** Measuring-surface sound-pressure level acc. to DIN EN 21680, measured at a distance of 1 m at medium inlet pressure and with connected pipes.

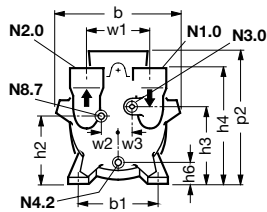
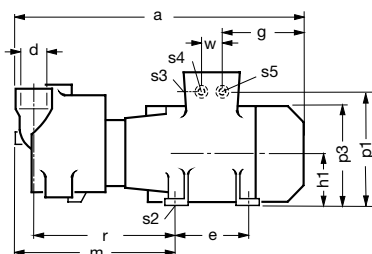
*** The quantities of operating liquid apply for fresh water operation without discharge liquid separator.

For partial recirculation operation the quantity of the fresh applied refrigerant can be reduced by circulation of the operating liquid in a circuit (with discharge liquid separator and internal recirculation of the operating liquid, available as accessories).

Other voltages

		2BV2 070-... □ - □ S	
50 Hz	60 Hz		
3- ATEX Category 2G			
230 V Δ / 400 V Y	-	D	1
400 V Δ / 690 V Y	-	D	6
500 V Δ	-	D	5
-	460 V Δ	G	6
-	460 V Y	G	1
-	575 V Δ	G	5

Dimensions

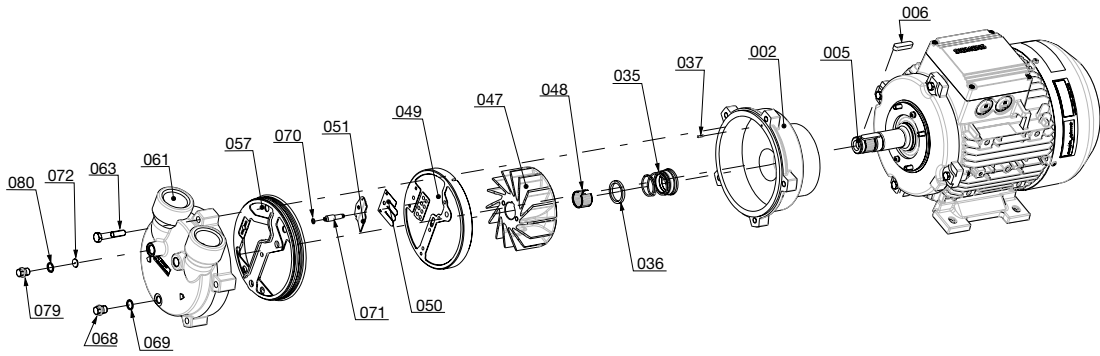


N1.0 Inlet flange
 N2.0 Pressure flange
 N3.0 Connection operating liquid
 N4.2 Drain
 N8.7 Cavitation protection

Quantity of Operating Liquid

Frequency	for fresh water operation at Inlet pressure ***
Hz	m³/h
50	0.5
60	0.5

2BV2 070-...3-/-...4-..	a	b	b1	e	g	h1	h2	h3	h4	h6	m	p1	p2	p3	r
[mm]	551	266	216	140	224	133	160	178	254	65	271	240	300	266	233
	s2	s3/s4	s5	w	w1	w2	w3	d (N1.0, N2.0)	N3.0	N4.2	N8.7				
	14	M32 x 1.5	M32 x 1.5	42	110	33	27	G1½ x 20	G¾ x 12	G¼ x 12	G¾ x 12				



Materials of construction

Part- No.	Designation	Material combination		
		cast iron/ceramic/bronze	CrNi steel/ceramic/CrNi steel	CrNi steel/CrNi steel/CrNi steel
002	Casing	Grey cast iron (EN-GJL HB 195 / EN-JL2030) EN 1561	Cast chrome-nickel-molybdenum steel (G-X6CrNiMo 18-10 / 1.4408) EN 10213-4	Cast chrome-nickel-molybdenum steel (G-X6CrNiMo 18-10 / 1.4408) EN 10213-4
005	Pump shaft	Chrome steel (X20Cr13 / 1.4021) EN 10088 - 3	Chrome-nickel-molybdenum steel (X6CrNiMoTi 17-12-2 / 1.4571) EN 10088 - 3	Chrome-nickel-molybdenum steel (X6CrNiMoTi 17-12-2 / 1.4571) EN 10088 - 3
006	Feather key	Chrome-nickel-molybdenum steel (X6CrNiMoTi 17-12-2 / 1.4571) EN 10088 - 3	Chrome-nickel-molybdenum steel (X6CrNiMoTi 17-12-2 / 1.4571) EN 10088 - 3	Chrome-nickel-molybdenum steel (X6CrNiMoTi 17-12-2 / 1.4571) EN 10088 - 3
035	Mechanical seal	Carbon / Ceramic / Viton (FPM) / Chrome-nickel steel (EN 12756 - BVVGG)	SIC / Carbon / Viton (FPM) / Teflon (PTFE) sheathed / Chrome-nickel-molybdenum steel (EN 12756 - Q1BM1GG)	SIC / Carbon / Viton (FPM) / Teflon (PTFE) sheathed / Chrome-nickel-molybdenum steel (EN 12756 - Q1BM1GG)
036	Washer	Chrome-nickel steel X10CrNiS 18-9 / 1.4305 / EN 10088 - 3	Chrome-nickel steel X10CrNiS 18-9 / 1.4305 / EN 10088 - 3	Chrome-nickel steel X10CrNiS 18-9 / 1.4305 / EN 10088 - 3
037	Set screw	Chrome-nickel-molybdenum steel (X5CrNiMo 17-12-2 / 1.4401) EN 10088 - 2	Chrome-nickel-molybdenum steel (X5CrNiMo 17-12-2 / 1.4401) EN 10088 - 2	not applicable
047	Impeller	Cast aluminium bronze (G-CuAl10Fe5Ni5 / CC33G-GS) EN 1982	Cast chrome-nickel-molybdenum steel (G-X6CrNiMo 18-10 / 1.4408) EN 10213-4	Cast chrome-nickel-molybdenum steel (G-X6CrNiMo 18-10 / 1.4408) EN 10213-4
048	Tolerance ring for impeller	Chrome-nickel steel (X12CrNi 17-7 / 1.4310) EN 10088 - 2	Chrome-nickel steel (X12CrNi 17-7 / 1.4310) EN 10088 - 2	Chrome-nickel steel (X12CrNi 17-7 / 1.4310) EN 10088 - 2
049	Port plate	Ceramic - C221 EN 60672 - 1	Ceramic - C221 EN 60672 - 1	Cast chrome-nickel-molybdenum steel (G-X6CrNiMo 18-10 / 1.44.08) EN 10213-4
050	Valve plate	Teflon (PTFE)	Teflon (PTFE)	Teflon (PTFE)
051	Intercepting plate	Chrome-nickel-molybdenum steel (X10CrNiMoTi 18-10 / 1.4571) EN 10088 - 2	Chrome-nickel-molybdenum steel (X10CrNiMoTi 18-10 / 1.4571) EN 10088 - 2	Chrome-nickel-molybdenum steel (X10CrNiMoTi 18-10 / 1.4571) EN 10088 - 2
057	Gasket for cover	Nitrile-butadiene-caotchouc (NBR) ISO 1629	Viton (FPM)	flat gasket: Teflon (PTFE) and O-ring: silicone-caotchouc / Teflon (PTFE) sheathed
061	Cover	Grey cast iron (EN-GJL HB 195 / EN-JL2030) EN1561	Cast chrome-nickel-molybdenum steel (G-X6CrNiMo 18-10 / 1.4408) EN 10213-4	Cast chrome-nickel-molybdenum steel (G-X6CrNiMo 18-10 / 1.4408) EN 10213-4
063	Screw	Steel (DIN ISO 8992)	Steel (DIN ISO 8992)	Steel (DIN ISO 8992)
068	Plug screw	Machining steel, lead alloyed (11SMnPb30 / 1.0718) EN 10087	Chrome-nickel-molybdenum steel (X10CrNiMoTi 18-10 / 1.4571) EN 10088 - 3	Chrome-nickel-molybdenum steel (X10CrNiMoTi 18-10 / 1.4571) EN 10088 - 3
069	Sealing ring	Teflon (PTFE)	Teflon (PTFE)	Teflon (PTFE)
070	O-Ring	FPM (flour rubber)	FPM (flour rubber)	FEP (Perfluorethylenpropylen) & Silicon
071	Pipe of cavitation protection	Chrome-nickel-molybdenum steel (X10CrNiMoTi 18-10 / 1.4571) EN 10088 - 3	Chrome-nickel-molybdenum steel (X10CrNiMoTi 18-10 / 1.4571) EN 10088 - 3	Chrome-nickel-molybdenum steel (X10CrNiMoTi 18-10 / 1.4571) EN 10088 - 3
072	Washer for cavitation protection	Chrome-nickel steel (X5CrNi 18-10 / 1.4301) EN 10088 - 3	Chrome-nickel steel (X5CrNi 18-10 / 1.4301) EN 10088 - 3	Chrome-nickel steel (X5CrNi 18-10 / 1.4301) EN 10088 - 3
079	Plug screw	Machining steel, lead alloyed (11SMnPb30 / 1.0718) EN 10087	Chrome-nickel-molybdenum steel (X5CrNiMo 17-12-2 / 1.4401) EN 10088 - 3	Chrome-nickel-molybdenum steel (X5CrNiMo 17-12-2 / 1.4401) EN 10088 - 3
080	Dichtring	Teflon (PTFE)	Teflon (PTFE)	Teflon (PTFE)



Changes in particular the quoted performance curve, datas and weights without prior notice. The figures are without obligations.

Gardner Denver

*Elmo Rietschle is a brand of the
Gardner Denver Blower Division*

info@de.gardnerdenver.com
www.gd-elmorietschle.com

Gardner Denver Schopfheim GmbH

Roggenbachstraße 58
79650 Schopfheim - Germany

Tel.: +49 7622 392-0
Fax: +49 7622 392-300

Gardner Denver Deutschland GmbH

Industriestraße 26
97616 Bad Neustadt - Germany

Tel.: +49 9771 6888-0
Fax: +49 9771 6888-4000