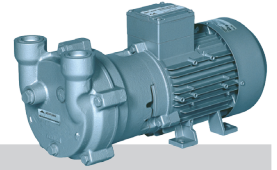
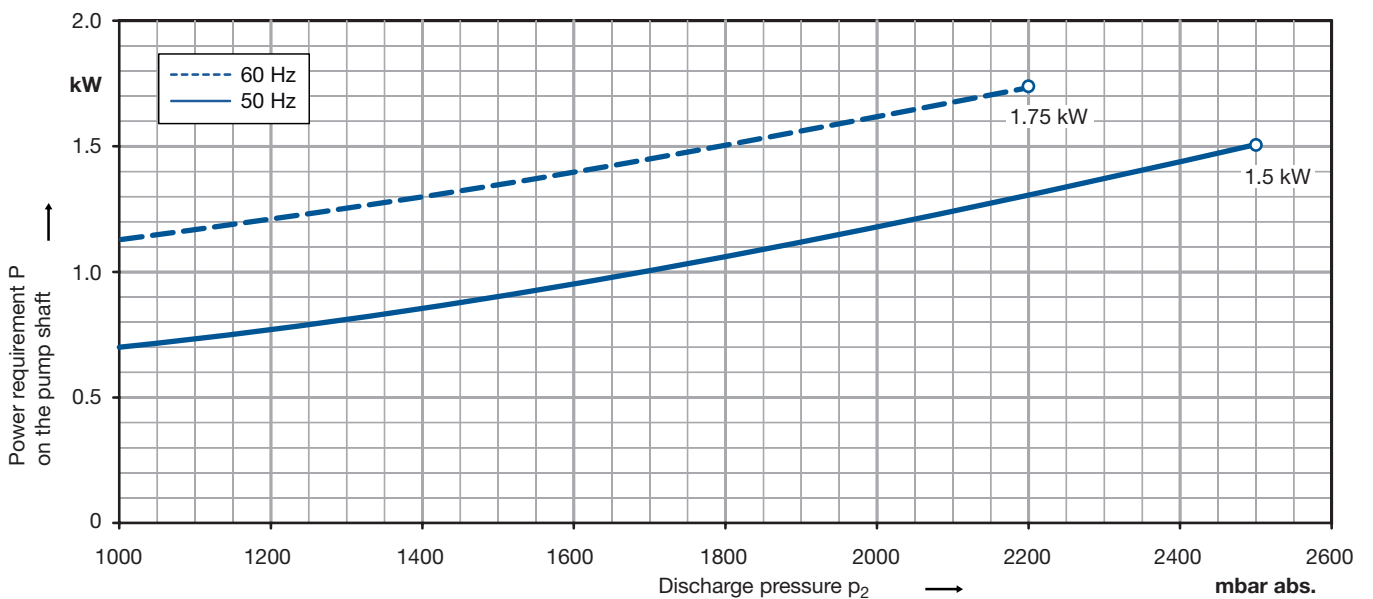
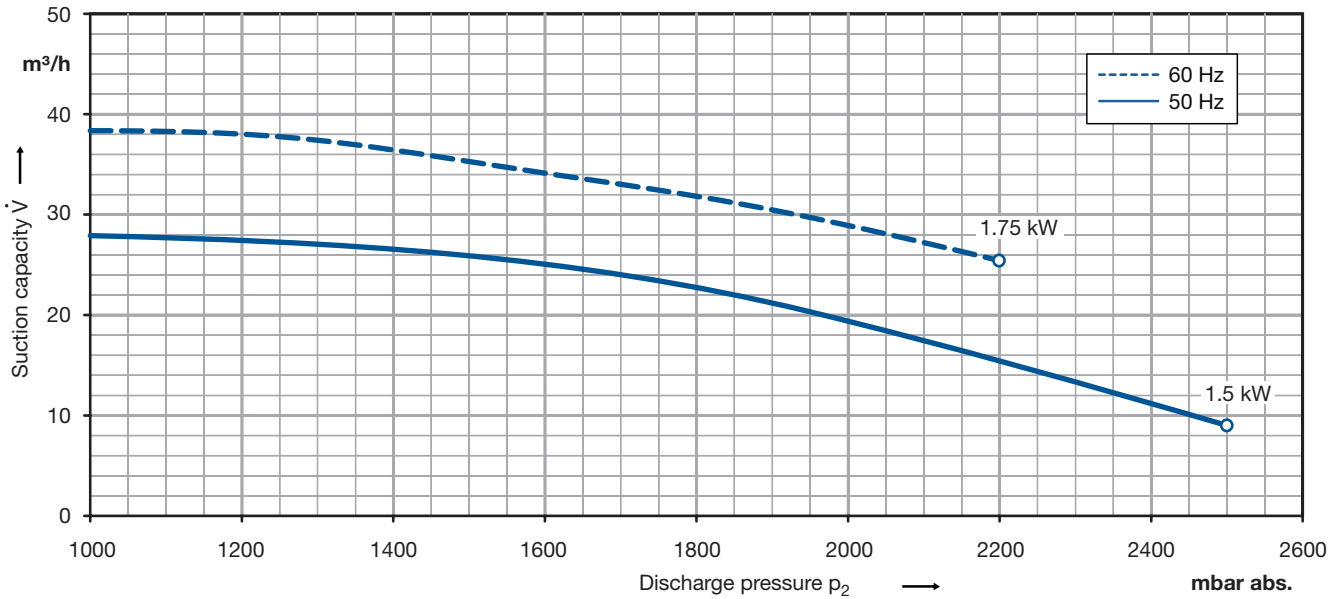


# Data sheet liquidring pump

Series L-BV2 | L\_200  
Range 2BV2 060 Compressor



## Performance curves for compressor operation



The characteristics are valid for the inlet of air with a relative humidity of 50 % and a temperature of 20 °C at a atmospheric pressure of 1013 mbar abs. and water at 15 °C as operating liquid.  
The tolerance is  $\pm 10\%$ .

The motors are supplied as standard for the input voltage ranges of 50 and 60 Hz and for the protection category IP55 as well as approbated for UL and CSA. Compressors with ATEX 94/9 EG for category 2G are available, too.

## Selection and ordering data

Materials Casing/port plate/impeller	Motor data				Order-No.	Quantity of operating liquid m³/h	Sound pressure level ** dB(A)	Weight approx. kg		
	Fre- quency Hz	Rated								
		voltage V	current A	output kW						
<b>3- 50/60 Hz version, protection class IP 55, insulation class F *</b>										
cast iron/ceramic/bronze	50 60	200Δ...240Δ 220Δ...275Δ	345Y...415Y 380Y...480Y	6.9 7.1	4.0 4.1	<b>1.5</b> <b>1.75</b>	<b>2BV2060-8NH02-8S</b>	0.2 0.2	67 69	21
cast iron/ceramic/bronze	50 60	345Δ...415Δ 380Δ...480Δ		4.0 4.1		<b>1.5</b> <b>1.75</b>	<b>2BV2060-8NH02-7S</b>	0.2 0.2	67 69	21
cast iron/ceramic/bronze	50 60	500Δ 575Δ		2.9 2.9		<b>1.5</b> <b>1.75</b>	<b>2BV2060-8NH02-5S</b>	0.2 0.2	67 69	21

The motors are designed according to DIN EN 60 034 / DIN IEC 34-1 and temperature class F. For the three phase machines the tolerances are ± 10 % for fixed voltage and ± 5 % for voltage range.

For all three phase machines according to UL and CSA norm (UL 507 and CSA 22.2 No. 100) the maximum allowed voltage tolerances are -10 % resp. +6 %. The frequency tolerance is maximum ± 2 %.

All L-BV2 achieve the standards and norms of the low voltage directive 72/23/EWG, rotating electrotechnical motor EN 60034-1-34, electromagnetic compatibility (EMC) DIN EN 61000-0/-6/-4.

\* For standard UL 507 and CSA 22.2 No 113 (Certificate Number E225239).

\*\* Measuring-surface sound-pressure level acc. to DIN EN 21680, measured at a distance of 1 m at medium inlet pressure and with connected pipes.

\*\*\* The quantities of operating liquid apply for fresh water operation without discharge liquid separator.

For partial recirculation operation the quantity of the fresh applied refrigerant can be reduced by circulation of the operating liquid in a circuit (with discharge liquid separator and internal recirculation of the operating liquid, available as accessories).

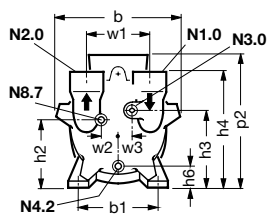
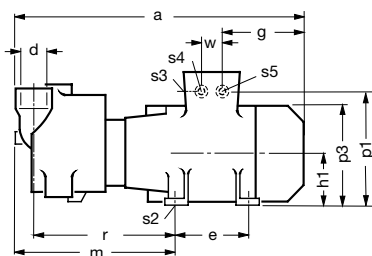
## Other voltages

		2BV72 060-...□...□S	
50 Hz	60 Hz		
<b>3-</b>			
185...220 V Δ / 320...380 V Y	200...254 V Δ / 345...440 V Y	H	0
220...240 V Δ / 345...415 V Y	220...275 V Δ / 380...480 V Y	H	8
345...415 V Δ	380...480 V Δ	H	7
500 V Δ	575 V Δ	H	5
<b>3- ATEX Category 2G</b>			
230 V Δ / 400 V Y	-	D	1
400 V Δ / 690 V Y	-	D	6
500 V Δ	-	D	5
-	460 V Δ	G	6
-	460 V Y	G	1
-	575 V Δ	G	5

## Quantity of Operating Liquid

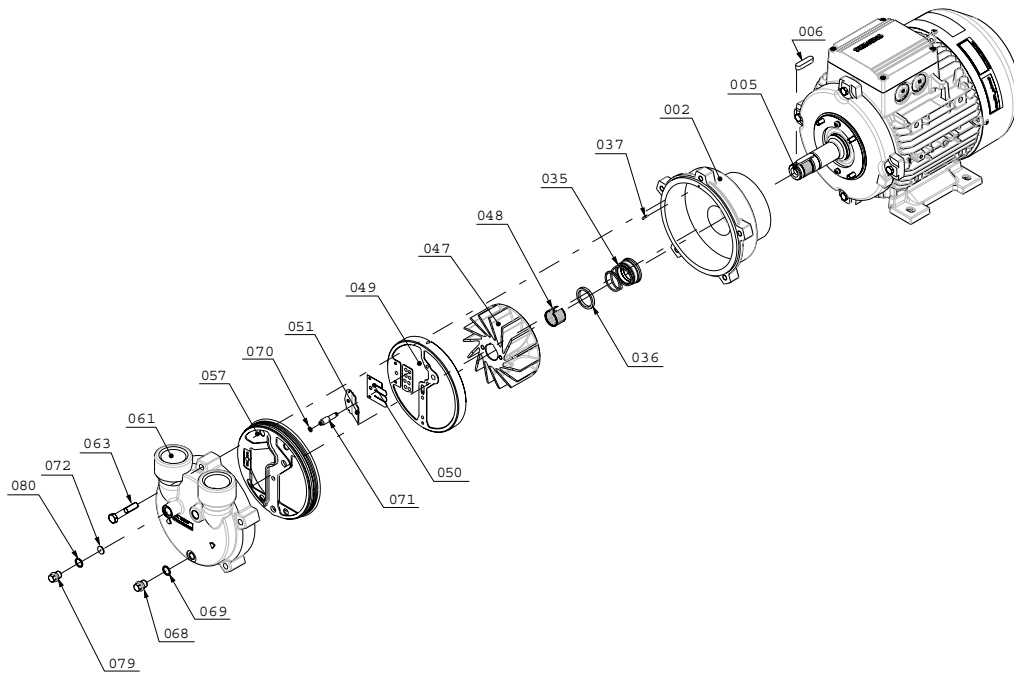
Frequency	for fresh water operation at Inlet pressure ***
Hz	m³/h
50	0.2
60	0.2

## Dimensions



**N1.0** Inlet flange  
**N2.0** Pressure flange  
**N3.0** Connection operating liquid  
**N4.2** Drain  
**N8.7** Cavitation protection

2BV2 060-...2-..	a	b	b1	e	g	h1	h2	h3	h4	h6	m	p1	p2	p3	r
[mm]	457	185	140	100	184	90	117	125	194	37	234	193	216	180	207
	s2	s3/s4		s5	w	w1	w2	w3	d (N1.0, N2.0)	N3.0	N4.2	N8.7			
	10	M25 x 1.5		M16 x 1.5	32	110	25	21	G1 x 20	G¾ x 12	G¼ x 12	G¾ x 12			



**Materials of construction**

Part-Nr.	Designation	Material
002	Casing	Grey cast iron (EN-GJL HB 195 / EN-JL2030) EN 1561
005	Pump shaft	Chrome steel (X20Cr13 / 1.4021) EN 10088 - 3
006	Feather key	Chrome-nickel-molybdenum steel (X6CrNiMoTi 17-12-2 / 1.4571) EN 10088 - 3
035	Mechanical seal	Carbon / Ceramic / Viton (FPM) / Chrome-nickel steel
036	Washer	Chrome-nickel steel (X10CrNiS 18-9 / 1.4305) EN 10088 - 3
037	Set screw	Chrome-nickel-molybdenum steel (X5CrNiMo 17-12-2 / 1.4401) EN 10088 - 2
047	Impeller	Cast aluminium bronze (G-CuAl10Fe5Ni5 / CC33G-GS) EN 1982
048	Tolerancing for impeller	Chrome-nickel steel (X12CrNi 17-7 / 1.4310) EN 10088 - 2
049	Port plate	Ceramic - C221 EN 60672 - 1
050	Valve plate	Teflon (PTFE)
051	Intercepting plate	Chrome-nickel-molybdenum steel (X10CrNiMoTi 18-10 / 1.4571) EN 10088 - 2
057	Gasket for cover	Nitrile-butadiene-caotchouc (NBR)
061	Cover	Grey cast iron (EN-GJL HB 195 / EN-JL2030) EN1561
063	Screw	Steel (DIN ISO 8992)
068	Plug screw	Machining steel, lead alloyed (11SMnPb30 / 1.0718) EN 10087
069	Sealing ring	Teflon (PTFE)
070	O-Ring	FPM (flour rubber)
071	Pipe of cavitation protection	Chrome-nickel-molybdenum steel (X10CrNiMoTi 18-10 / 1.4571) EN 10088 - 3
072	Washer for cavitation protection	Chrome-nickel steel (X5CrNi 18-10 / 1.4301) EN 10088 - 3
079	Plug screw	Machining steel, lead alloyed (11SMnPb30 / 1.0718) EN 10087
080	Sealing ring	Teflon (PTFE)



Changes in particular the quoted performance curve, datas and weights without prior notice. The figures are without obligations.

---

# **Gardner Denver**

*Elmo Rietschle is a brand of the  
Gardner Denver Blower Division*

info@de.gardnerdenver.com  
www.gd-elmorietschle.com

## **Gardner Denver Schopfheim GmbH**

Roggenbachstraße 58  
79650 Schopfheim - Germany

Tel.: +49 7622 392-0  
Fax: +49 7622 392-300

## **Gardner Denver Deutschland GmbH**

Industriestraße 26  
97616 Bad Neustadt - Germany

Tel.: +49 9771 6888-0  
Fax: +49 9771 6888-4000