



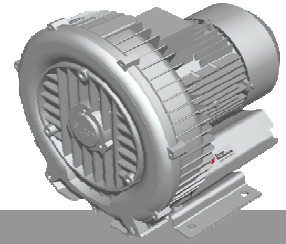
**Elmo
Rietschle**
A Gardner Denver Product

G-BH1

Data sheet 2BH1 400

Side channel blower

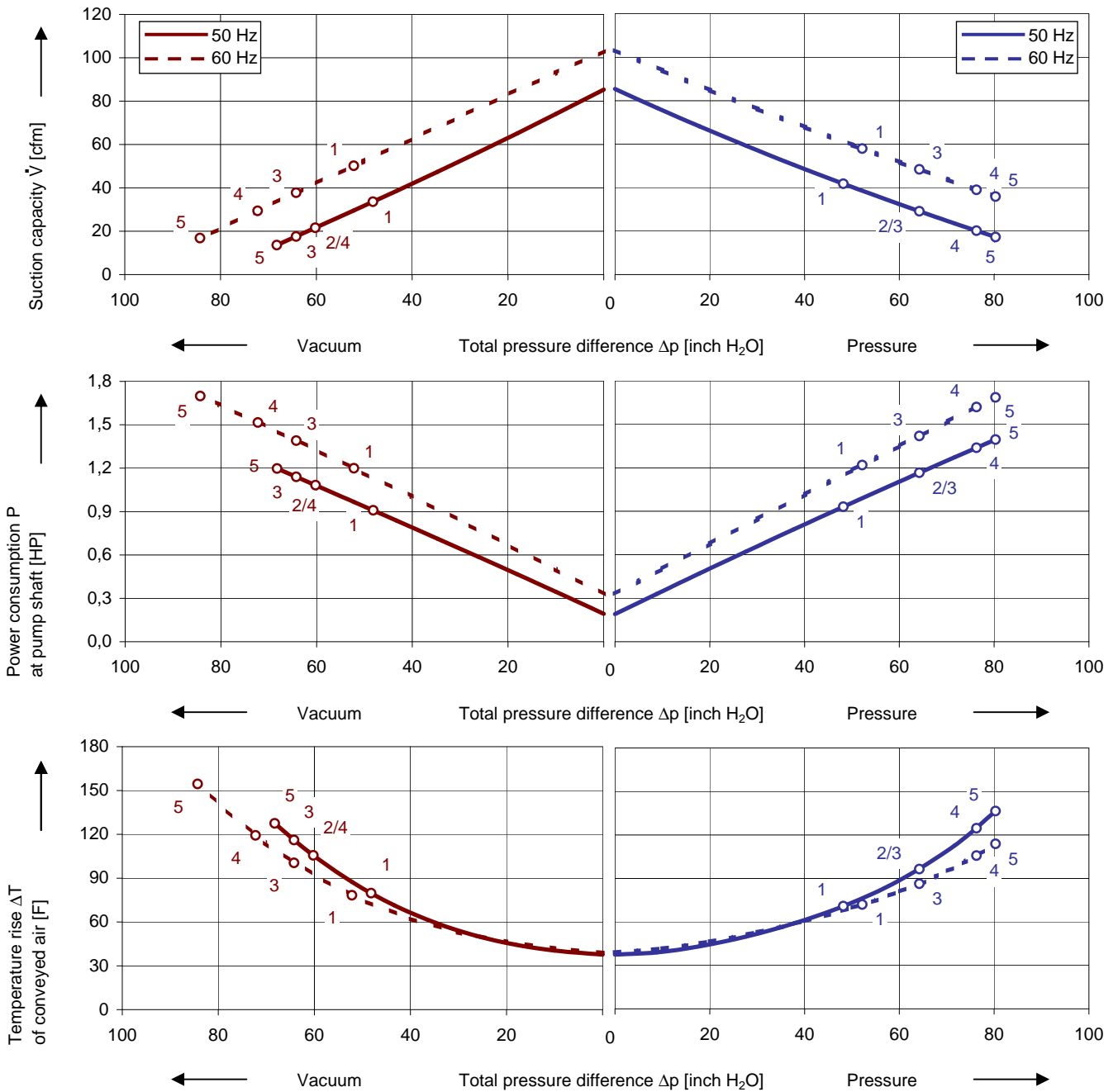
CA[®] US



Performance curves

Vacuum operation

Compressor operation



The performance curves are based on air at a temperature of 59 F and an atmospheric pressure of 401.53 inch H₂O with a tolerance of ± 10 %. The total pressure differences are valid for suction and ambient temperature up to 77 F. For other conditions please get in touch with us.

Every G-BH pump can be used both as vacuum pump and compressor in continuous operation over the total performance curve range. The motors are available as standard in protection category IP 55 and insulation class F. The vacuum pumps / compressors are UL and CSA approved.

